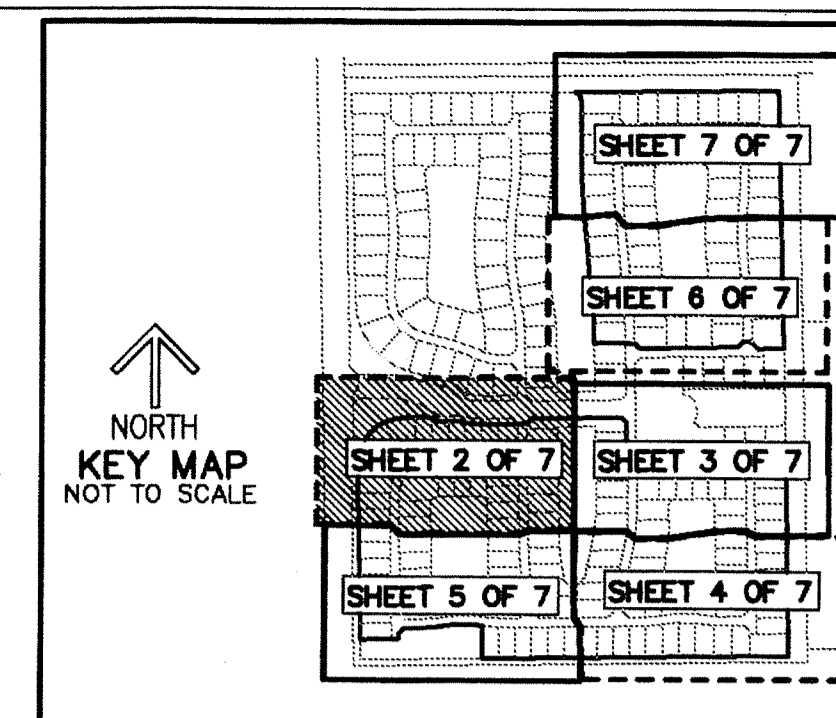
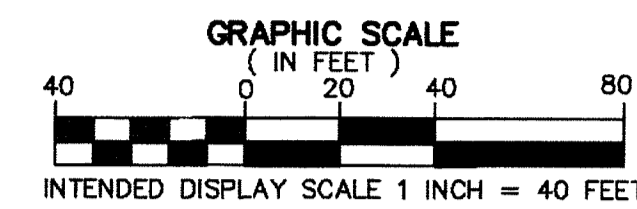


- LEGEND/ABBREVIATIONS**
- PRM - INDICATES SET PERMANENT REFERENCE MONUMENT
  - 4"X4"X24" CONCRETE MONUMENT WITH DISK
  - STAMPED "PRM LB#3591", UNLESS OTHERWISE NOTED
  - - INDICATES PERMANENT CONTROL POINT
  - CL - CENTERLINE
  - ∠ - CENTRAL ANGLE
  - R - RADIUS
  - L - ARC LENGTH
  - AC - ACRES
  - CS - CHORD BEARING
  - CD - CHORD DISTANCE
  - DE - DRAINAGE EASEMENT
  - PBCUE - PALM BEACH COUNTY UTILITY EASEMENT
  - FPL - FLORIDA POWER & LIGHT CO.
  - LMAE - LAKE MAINTENANCE ACCESS EASEMENT
  - LME - LAKE MAINTENANCE EASEMENT
  - L.W.D.D. - LAKE WORTH DRAINAGE DISTRICT
  - N.T.S. - NOT TO SCALE
  - O.R.B. - OFFICIAL RECORD BOOK
  - (R) - RADIAL LINE
  - SF - SQUARE FEET
  - SWE - SIDEWALK EASEMENT
  - UE - UTILITY EASEMENT
  - (P) - DENOTES ROYAL PALM POLO AS RECORDED IN PLAT BOOK 117, PAGES 194-200 PALM BEACH COUNTY RECORDS

# ROYAL PALM POLO PLAT TWO

A PLANNED UNIT DEVELOPMENT  
 BEING A REPLAT OF A PORTION OF PARCEL A, TOGETHER WITH ALL OF PARCEL B, PARCEL C, TRACT L3, LOTS 161 AND 162 OF BLOCK 4,  
 ROYAL PALM POLO, AS RECORDED IN PLAT BOOK 117, PAGES 194 THROUGH 200  
 OF THE PUBLIC RECORDS OF PALM BEACH COUNTY, FLORIDA,  
 LYING IN THE SOUTHEAST ONE-QUARTER OF SECTION 34, TOWNSHIP 46 SOUTH, RANGE 42 EAST,  
 CITY OF BOCA RATON, PALM BEACH COUNTY, FLORIDA.

THIS INSTRUMENT PREPARED BY  
 DAVID P. LINDLEY  
 OF  
**CAULFIELD and WHEELER, INC.**  
 SURVEYORS - ENGINEERS - PLANNERS  
 7900 GLADES ROAD, SUITE 100  
 BOCA RATON, FLORIDA 33434 - (561)392-1991

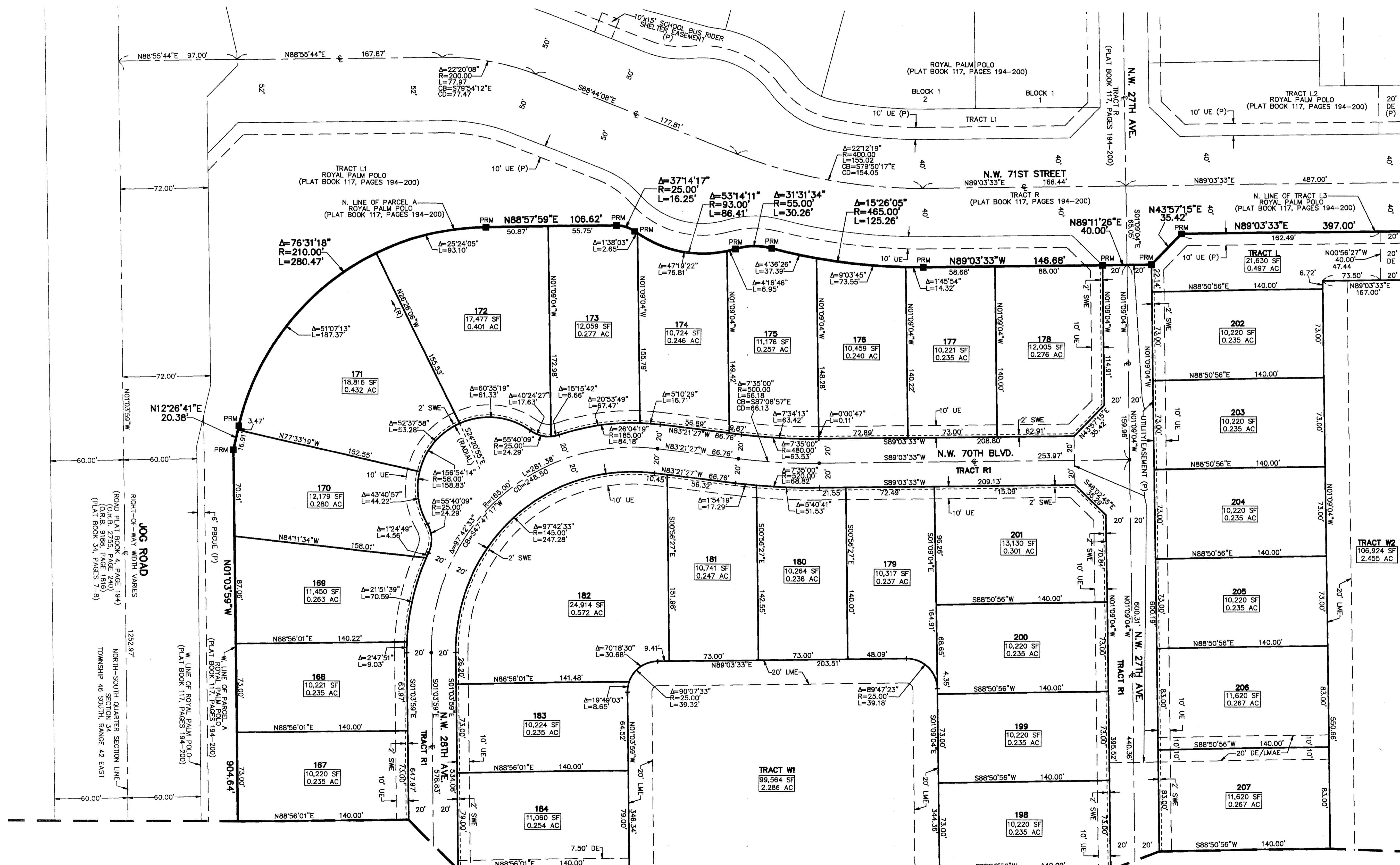


106

STATE OF FLORIDA  
 COUNTY OF PALM BEACH  
 THIS PLAT WAS FILED FOR  
 RECORD AT \_\_\_\_\_ M.  
 THIS \_\_\_\_\_ DAY OF \_\_\_\_\_  
 A.D. 20\_\_\_\_ AND DULY RECORDED  
 IN PLAT BOOK \_\_\_\_\_ ON  
 PAGES \_\_\_\_\_ AND \_\_\_\_\_  
 SHARON R. BOCK  
 CLERK AND COMPTROLLER

BY: \_\_\_\_\_  
 DEPUTY CLERK

**SHEET 2 OF 7**



**MATCH LINE SHEET 5 OF 7**

**MATCH LINE SHEET 3 OF 7**